

Anti-RAB7A Rabbit pAb

Affinity Purified Rabbit Polyclonal Antibody

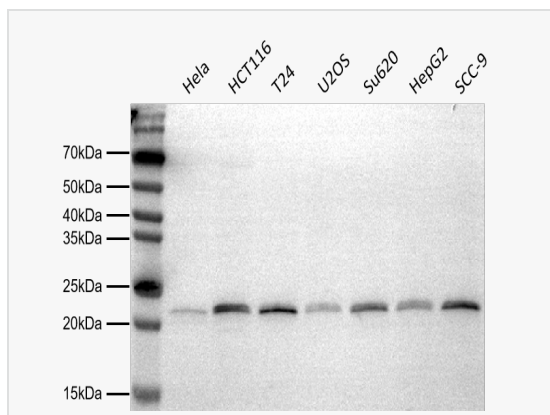
Catalog # P900010

Product Information

Application	WB, IF (Cell)/ICC
Reactivity	Human, Mouse, Rat
Dilution	WB 1:1,000~1:2,000; IF 1:100~200
Host	Rabbit
Clonality	Polyclonal
Isotype	IgG
Label	Unconjugated
Immunogen	This RAB7A antibody is generated from rabbits immunized with a SHC conjugated synthetic peptide between 184-198 amino acids from human RAB7A.
Format	Purified polyclonal antibody supplied in PBS with 0.01% sodium azide and 50% glycerol, pH 7.3. This antibody is purified through a protein G column.
Storage	Shipped on wet ice. Store at -20°C. Stable for 24 months from date of receipt. Aliquoting is unnecessary for -20°C storage.
Precautions	Anti-RAB7A Rabbit pAb is for research use only and not for use in diagnostic or therapeutic procedures.

Protein Information

Synonyms	RAB7; Ras-related protein Rab-7a; EC:3.6.5.2
Calculated MW	Calculated MW: 23 kDa; Observed MW: 23 kDa
Uniprot ID	P51149
Gene ID	7879
Antigen Region	184-198aa
Background	Rab proteins belong to the GTPase family and are mainly involved in membrane transport. There are two types of Rab7 in mammals, namely Rab7a and Rab7b, which share 50% homology and play a role in different stages of membrane transport. Rab7a is mainly located in the late endosome. Rab7a regulates the transport of early endosome to late endosome and late endosome to lysosome.
Cellular Location	Cytoplasmic vesicle; phagosome membrane; Late endosome membrane; Late endosome membrane.



Western Blot - Anti-RAB7A Rabbit pAb

All lanes: P900010 at 1:1,000 dilution

Lane 1: HeLa cell Lysates

Lane 2: HCT116 cell Lysates

Lane 3: T24 cell Lysates

Lane 4: U2OS cell Lysates

Lane 5: Su620 cell Lysates

Lane 6: HepG2 cell Lysates

Lane 7: SCC-9 cell Lysates

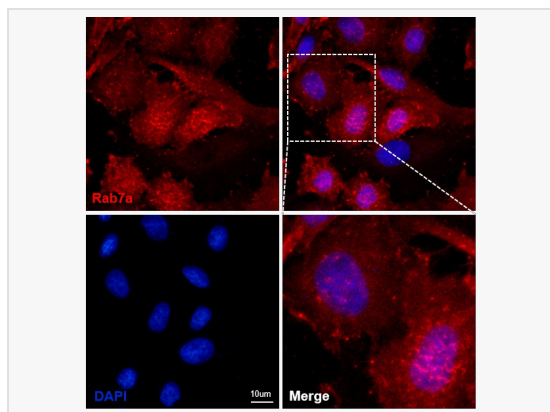
lysates/proteins at 20 μ g per lane.

Secondary antibody: Goat Anti-Rabbit IgG(h+L), HRP Conjugated (Cat. No. LF102) at 1:5,000 dilution

Predicted band size: 23 kDa

Observed band size: 23 kDa

Developed using the ECL technique (Cat. No. SQ201).



Immunofluorescence - Anti-RAB7A Rabbit pAb

Sample: HeLa cells

The cells were fixed with 4% paraformaldehyde (10 min), permeabilized with 0.5% Triton X-100 for 10 minutes and then blocked with 5% BSA in 0.1% PBS-Tween for 0.5 hours.

Primary antibody: P900010 at 1:100 dilution

Secondary antibody: Goat anti-Rabbit (CY3) at 1:1,000 dilution (shown in red)

Nuclei were stained with DAPI (shown in blue).