

Anti-HSP60 Rabbit pAb

Affinity Purified Rabbit Polyclonal Antibody

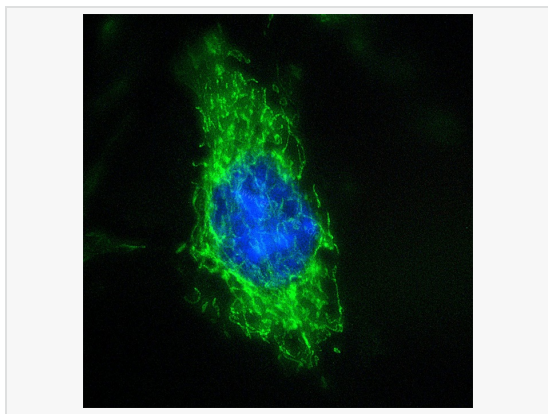
Catalog # P900009

Product Information

Application	IHC-P/IF (Tissue-P), WB, IF (Cell)/ICC, ELISA
Reactivity	Human, Mouse, Rat
Dilution	WB 1:1,000~1:2,000; IHC-P 1:150~1:200; IF 1:100
Host	Rabbit
Clonality	Polyclonal
Isotype	IgG
Label	Unconjugated
Immunogen	This HSP60 antibody is generated from rabbits immunized with a SHC conjugated synthetic peptide between 64-77 amino acids from human HSP60.
Format	Purified polyclonal antibody supplied in PBS with 0.01% (W/V) sodium azide and 50% glycerol. This antibody is purified by peptide affinity.
Storage	Shipped on wet ice. Store at -20°C. Stable for 24 months from date of receipt. Aliquoting is unnecessary for -20°C storage.
Precautions	Anti-HSP60 Rabbit pAb is for research use only and not for use in diagnostic or therapeutic procedures.

Protein Information

Synonyms	HSP-60; HSPD1; SPG13; GroEL
Calculated MW	Calculated MW: 63 kDa; Observed MW: 63 kDa
Uniprot ID	P10809
Gene ID	3329
Antigen Region	64-77 aa
Background	Hsp60 is a member of a highly conserved family which includes molecular chaperones from several species. Hsps are intracellular proteins which are thought to serve protective functions against infection and cellular stress, however several recent studies indicate that members of the Hsp60 family are linked to a number of autoimmune diseases, arteriosclerosis and chlamydial disease.
Cellular Location	Mitochondrion matrix.



Immunofluorescence - Anti-HSP60 Rabbit pAb

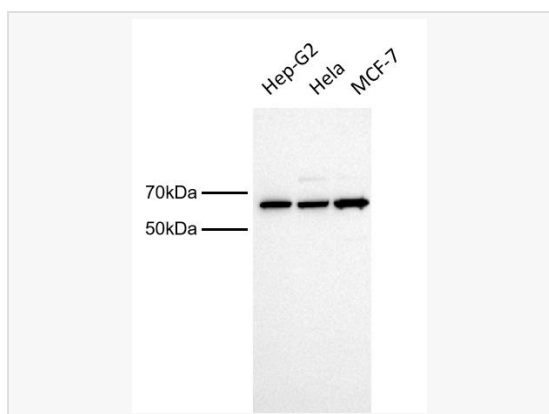
Sample: HeLa cells

The cells were fixed with 4% paraformaldehyde (10 min), permeabilized with 0.5% Triton X-100 for 10 minutes and then blocked with 5% BSA in 0.1% PBS-Tween for 0.5 hours.

Primary antibody: P900009 at 1:100 dilution

Secondary antibody: Goat anti-Rabbit (488) at 1:1,000 dilution (shown in green)

Nuclei were stained with DAPI (shown in blue).



All lanes: HSP60 Rabbit pAb at 1:1,000 dilution

Lane 1: Hep-G2 cell Lysates

Lane 2: HeLa cell Lysates

Lane 3: MCF-7 cell Lysates

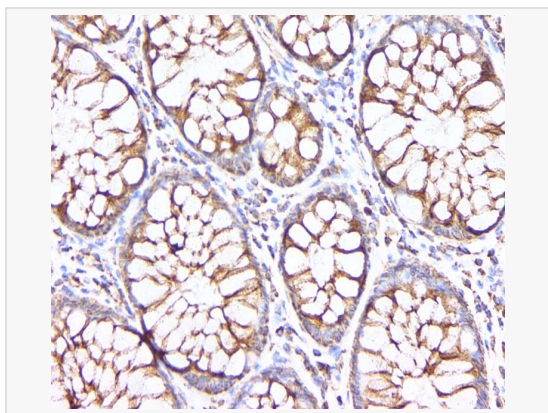
Lysates/proteins at 20 μ g per lane.

Secondary

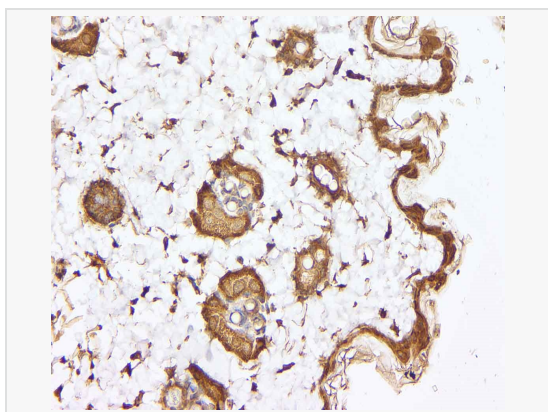
Goat Anti-Rabbit IgG (H+L), Peroxidase conjugated (LF102) at 1:5,000 dilution.

Observed band size: 63 kDa

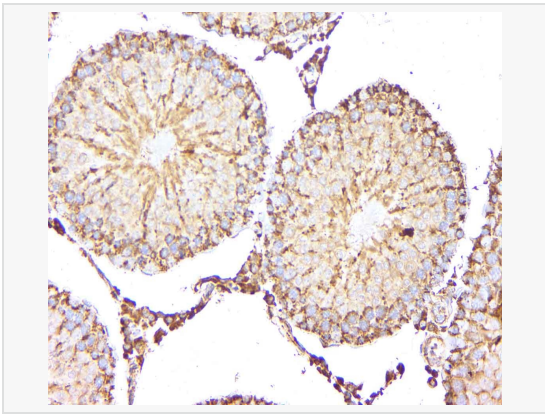
Blocking/Dilution buffer: 1 \times PBST.



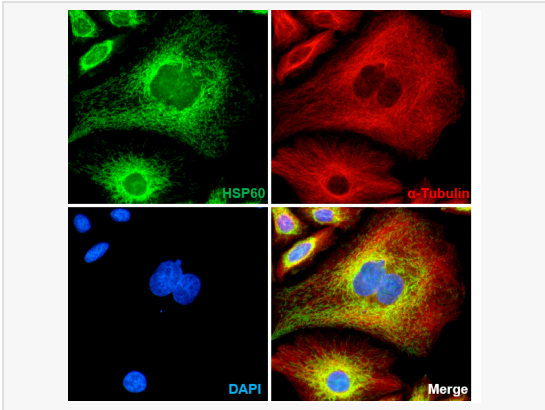
Immunohistochemical analysis of paraffin-embedded colon cancer tissue using Anti-HSP60 Rabbit pAb. Antigen repair using EDTA antigen repair solution and blocking with 5% BSA for 0.5 hour. Samples were incubated with primary antibody (1:150) overnight at 4°C. A undiluted HRP-labeled anti-rabbit IgG was used as the secondary antibody for 0.5 hour.



Immunohistochemical analysis of paraffin-embedded mouse skin tissue using Anti-HSP60 Rabbit pAb. Antigen repair using EDTA antigen repair solution and blocking with 5% BSA for 0.5 hour. Samples were incubated with primary antibody (1:150) overnight at 4°C. A undiluted HRP-labeled anti-rabbit IgG was used as the secondary antibody for 0.5 hour.



Immunohistochemical analysis of paraffin-embedded rat testis tissue using Anti-HSP60 Rabbit pAb. Antigen repair using EDTA antigen repair solution and blocking with 5% BSA for 0.5 hour. Samples were incubated with primary antibody (1:150) overnight at 4°C. A undiluted HRP-labeled anti-rabbit IgG was used as the secondary antibody for 0.5 hour.



Immunofluorescence (Formalin/PFA-fixed cells) - Anti-HSP60 antibody
Immunofluorescence analysis of HeLa cells labelling HSP60.
Cells were incubated overnight at room temperature with primary antibody (HSP60) at 2 $\mu\text{g}/\text{mL}$.
Secondary antibodies Goat anti-Rabbit (488) (shown in green) were used, incubated 1 h at room temperature.
DAPI was used as nuclear counterstain (shown in blue).
Heat mediated antigen retrieval with Tris-EDTA buffer (pH 9.0) for 30 mins.