

# $\alpha$ -tubulin鼠单克隆抗体

$\alpha$ -tubulin Mouse Monoclonal Antibody (Recombinant)

本产品冰袋运输；-20°C保存12个月。

## 货号规格

货号	规格
LF209	100 $\mu$ L
LF209S	20 $\mu$ L

## 产品简介

本抗体为重组鼠单克隆抗体。微管是细胞骨架的重要组成部分，存在于所有哺乳动物细胞。它由分子量约 55 kDa 的 $\alpha$ 微管蛋白 ( $\alpha$ -Tubulin) 和 $\beta$ 微管蛋白 ( $\beta$ -Tubulin) 组成，并以 $\alpha\beta$ 异源二聚体的形式存在。二者表达水平相对恒定，常被用于 Western Blot 检测时校正系统的内参照。

克隆号	29D24H37
缓冲液	10 mM PBS(pH 7.4), 50% glycerol
防腐剂	0.02% sodium azide
应用种属	人、大鼠、小鼠、兔
应用范围	Western Blot(WB)、Immunohistochemistry(IHC)、Immunofluorescence(IF)

**推荐浓度** (最适浓度需根据具体情况调试)

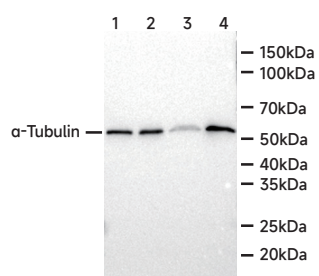
Western Blot: 1:5,000 ~ 1:10,000;

Immunohistochemistry: 1:200 ~ 1:500;

Immunofluorescence: 1:200 ~ 1:500。

## 注意事项

1. 为了获得实验最佳效果，请根据实验调整最佳工作稀释度；
2. 为了您的安全和健康，请穿实验服并戴一次性手套操作；
3. 本产品仅限科研使用。



Western Blot - Anti- $\alpha$ -Tubulin Mouse mAb (LF209)

All lanes: Anti- $\alpha$ -Tubulin Mouse mAb at 1:10,000 dilution

Lane 1 : A549 (human lung carcinoma epithelial cell) whole cell lysates

Lane 2 : HeLa (human cervix adenocarcinoma epithelial cell) whole cell lysates

Lane 3 : MCF7 (Human breast cancer epithelial cell) whole cell lysates

Lane 4 : HepG2 (human hepatocellular carcinoma epithelial cell) whole cell lysates

Lysates/proteins at 10  $\mu$ g per lane.

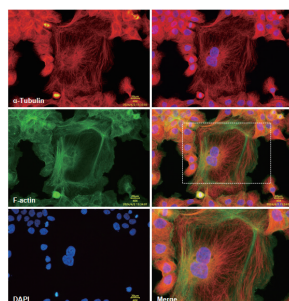
Secondary

All lanes: Goat Anti-Mouse IgG (H+L), HRP conjugated (LF101) at 1:5,000 dilution

Predicted band size: 55 kDa

Observed band size: 55 kDa

Developed using the ECL technique (SQ201).



Immunofluorescence (Formalin/PFA-fixed cells) - Anti- $\alpha$ -Tubulin antibody

Immunofluorescence analysis of A431 cells labelling  $\alpha$ -Tubulin .

Cells were incubated overnight at room temperature with LF209 at 1:200.

Secondary antibodies Goat anti-Rabbit (cy3) (shown in red) and FITC conjugated phalloidin (shown in green) were used, incubated 1 h at room temperature.

DAPI was used as nuclear counterstain (shown in blue).

Heat mediated antigen retrieval with Tris-EDTA buffer (pH 9.0) for 30 mins.